

CARDIFF'S HOME FOR
STYLISH SALES
& LETTINGS

JeffreyRoss



LOWER CATHEDRAL ROAD
RIVERSIDE

LOWER CATHEDRAL ROAD

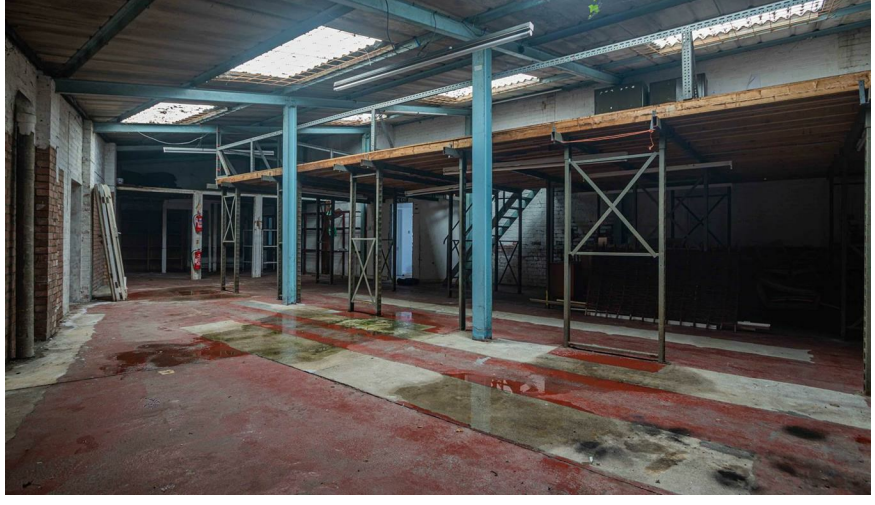
RIVERSIDE, CF11 6LU - £1,250 PCM

0 bedroom(s) 1 bathroom(s) sq ft

12 MONTH INTIAL LET AVAILABLE A fantastic opportunity to acquire an extremely spacious commercial unit in a prime location. Located on Lower Cathedral Road the property is just a 5-minute walk to the City Centre.

The proeprty offers great space and can be adapted to multi-usage subject to the necessary planning works.

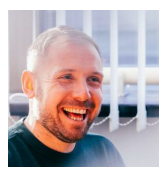
An additional office unit is available subject to negotiation.



Energy Efficiency Rating		
	Current	Potential
<i>Very energy efficient - lower running costs</i>		
(92 plus) A		
(81-91) B		
(69-80) C		
(55-68) D		
(39-54) E		
(21-38) F		
(1-20) G		
<i>Not energy efficient - higher running costs</i>		
England & Wales	EU Directive 2002/91/EC	

PROPERTY SPECIALIST

Jon Hooper-Nash
jon@jeffreygross.co.uk



Director

